

# INSTRUCTION MANUAL



## KEPCO

### ENCLOSURES AND HARDWARE SYSTEMS

# CA-200 CA-300

## KEPCO MODELS CA-200 AND CA-300 EQUIPMENT CASES

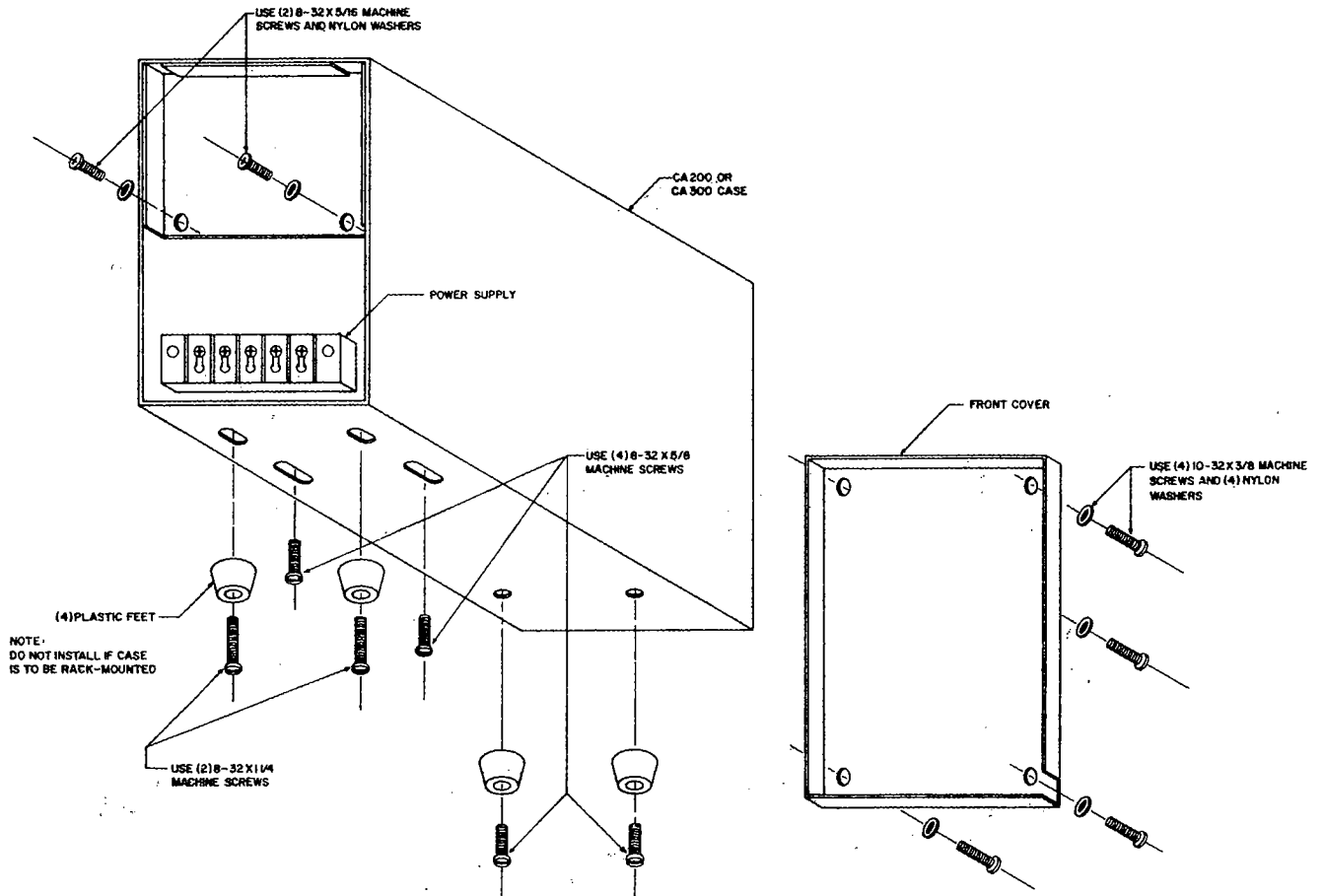
### DESCRIPTION

The Kepco Model CA-200 and CA-300 are single unit equipment cases designed to house Kepco "PRM" and "BKF" (GROUP II) power supplies. Power supplies mounted into these cases may be placed on equipment shelves, on the bench, or they may be mounted into equipment racks.

#### INSTALLATION OF POWER SUPPLY INTO CASE

- 1) REMOVE PROTECTIVE COVER(S) FROM THE POWER SUPPLY TO BE INSTALLED. (See your power supply instruction manual "Mechanical Outline Drawing".)
- 2) Slip power supply into case.
- 3) Remove the contents of the polyethylene bag:  
(4) PLASTIC FEET  
(6) NYLON WASHERS  
(4) MACHINE SCREWS, 10-32 x 3/8  
(4) MACHINE SCREWS, 8-32 x 5/8  
(2) MACHINE SCREWS, 8 x 32 x 1 1/4  
(2) MACHINE SCREWS, 8 x 32 x 5/16
- 4) Line up case and power supply mounting holes and insert appropriate mounting screws. (See "Installation Drawing.") DO NOT TIGHTEN SCREWS AT THIS TIME.
- 5) Install front cover. Tighten all mounting screws. This concludes the installation.

**NOTE:** For rack-installation of the cased power supply do not install the plastic feet. The same mounting hardware can be used *either* to install the feet, *or* to mount the case to a 1/8" thick mounting surface.



©KEPCO, INC., 1974 - ALL RIGHTS RESERVED  
This manual may not be reproduced in part or in whole without the written permission of Kepco, Inc. Specifications subject to change without notice.

INSTALLATION DRAWING

#228-0630

