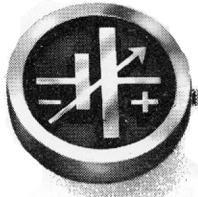


INSTRUCTION MANUAL



KEPCO An ISO 9001 Company.

RA 37
Rack System

ENCLOSURES AND HARDWARE SYSTEMS

GENERAL DESCRIPTION (Refer to FIG. 1)

The Kepco Model RA-37 RACK ADAPTER accepts Kepco "quarter-rack", "half-rack" and "three-quarter rack" equipment (See Table in Fig. 3) and can be mounted, either permanently or by means of chassis slides, into a standard (19") rack. The RA-37 bottom shelf is predrilled for the mounting hole patterns of the installed Kepco supplies. The mounting is accomplished by using coarse-threaded (8-18) flat-head screws through the bottom shelf of the RA-37 into the nylon expansion bushings on the Kepco equipment to be mounted. The RA-37 Rack Adapter occupies 5¼ inches of vertical space in the standard 19-inch equipment rack. The rear panels of the mounted power supplies are readily accessible when mounted onto the RA-37 for wiring to and from the equipment. Optional accessory components for the RA-37 Rack Adapter include BLANK FILLER PANELS, designed to occupy unused front panel spaces in the RA-37 Rack Adapter and a FILLER SUPPORT BRACKET to mount under the RA-37 Rack Adapter if the total load exceeds 75 lbs. The FSB brackets are also recommended for rack installations where several "layers" of equipment are stacked on top of each other, to provide better air circulation. See page 4 for details on available accessories.

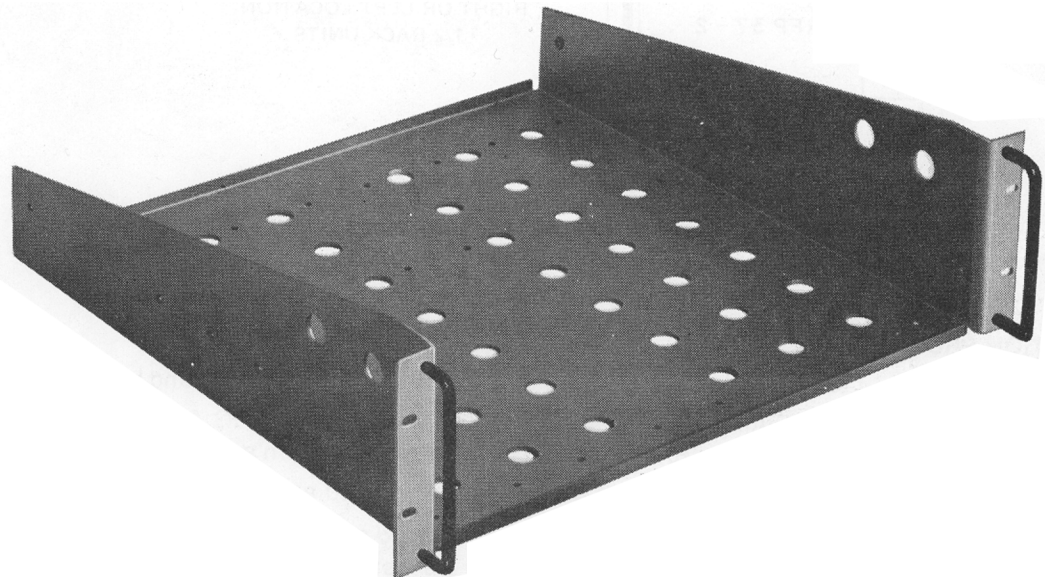


FIG. 1 KEPCO MODEL RA-37 RACK ADAPTER.

INSTALLATION OF THE RA-37 INTO THE EQUIPMENT RACK

The Kepco Model RA-37 Rack Adapter may be rigidly mounted to the equipment rack, or it can be mounted with chassis slides. The front flanges of the RA-37 are drilled for standard (2 1/4") mounting hole dimensions, while the sides are drilled and tapped for "JONATHAN" slides (See FIG. 3).

INSTALLATION OF KEPCO EQUIPMENT INTO THE RA-37 RACK ADAPTER (Refer to FIG. 2)

The bottom shelf of the RA-37 Rack Adapter is predrilled for mounting three-quarter rack, half-rack and quarter-rack models. A variety of mounting configurations are possible, some of which are indicated in FIG. 2. Unused front panel spaces in the RA-37 can be covered with (optional) filler panels, listed in the ACCESSORY paragraph. Heavy loads (above ~ 75 lbs.) should be supported by horizontal brackets across the bottom surface of the RA-37. Suitable support brackets, which mount directly under the lower front edge of the RA-37, can be obtained from Kepco. (See ACCESSORY paragraph).

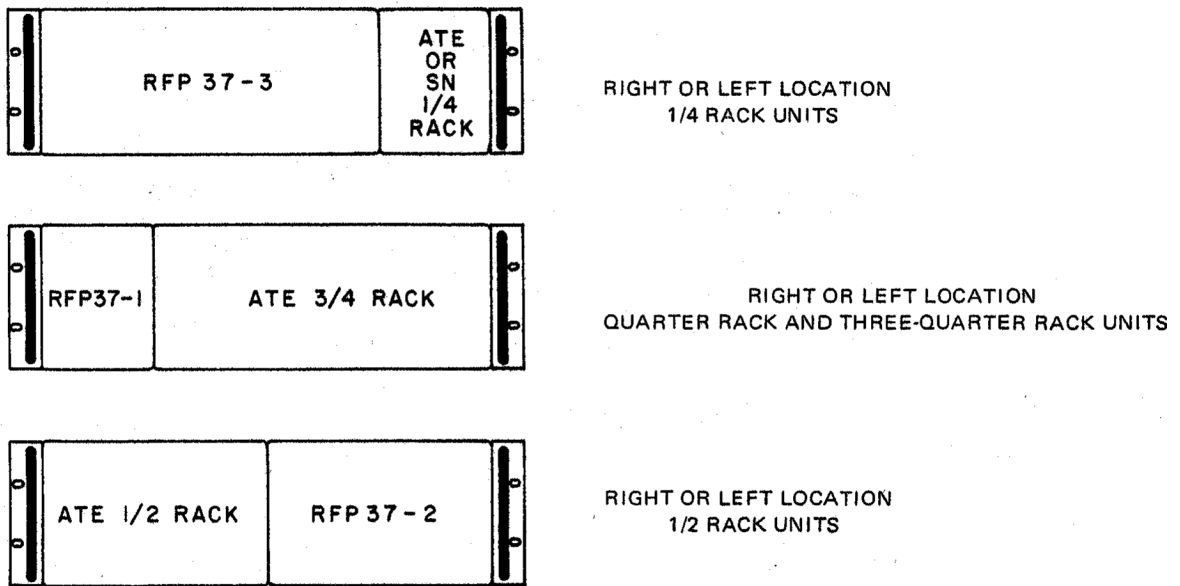


FIG. 2 SAMPLE MOUNTING CONFIGURATIONS.

INSTALLATION PROCEDURE.

- 1) Prepare the equipment to be installed by removing the bottom feet, side brackets and bail if so equipped.
- 2) Refer to FIG. 3 "Mechanical Outline Drawing". The "Kepco Model Table" in FIG. 3. lists the Kepco equipment which can be installed into the RA-37 and the mounting hole pattern associated with each model.
- 3) Use four (4) of the supplied mounting screws per unit to be installed and fasten unit to the RA-37.

NOTE: The mounting screws are 8/18 x 5/8" coarse threaded flat-head screws which mate through the bottom shelf of the RA-37 with the plastic expansion bushings which are installed on the bottom of each Kepco unit.

- 4) Install (optional) filler panels, filler support bracket and chassis slides as required. The mounting holes for these components are identified in the "Kepco Model Table" in FIG. 3.

KEPCO MODEL	CAN BE MOUNTED INTO THESE HOLE-GROUPS
ATE 1/4-RACK SERIES SN 488/500 1/4-RACK	A-A2-B-B2 or C-C2-D-D2 or E-E2-F-F2 or G-G2-H-H2
ATE 1/2-RACK SERIES	A-A2-D-D2 or E-E2-H-H2
ATE & BOP 3/4-RACK SERIES	A-A2-F-F2 or C-C2-H-H2
RFP 37-1 PANEL	A-B or C-D or E-F or G-H
RFP 37-2 PANEL	A-D or E-H
RFP 37-3 PANEL	A-F or C-H
FSB BRACKETS	J1-J2-J3-J4

NOTES:

- 1) MATERIAL: ALUMINUM ALLOY, 1/8 THICK.
- 2) FINISH: ENTIRE PIECE IRIDIUM 14 FLANGES, LIGHT GRAY FED. STD. 595 COLOR NO. 26440
- 3) TOLERANCES:
A) BETWEEN MOUNTING HOLE CENTERS: $\pm 1/64$ (± 0.4).
B) ALL OTHERS: $\pm 1/32$ (± 0.8) UNLESS OTHERWISE NOTED.
- 4) DIMENSIONS IN PARENTHESIS ARE IN MILLIMETERS.

SLIDE TYPE	USE MOUNTING HOLES (X)					
	S	T	U	V	W	R
110 QD-20-2	X	X	NA	X	NA	NA
110 QD-22-2	X	NA	X	NA	X	NA
110 QD-24-2	X	NA	X	NA	NA	X

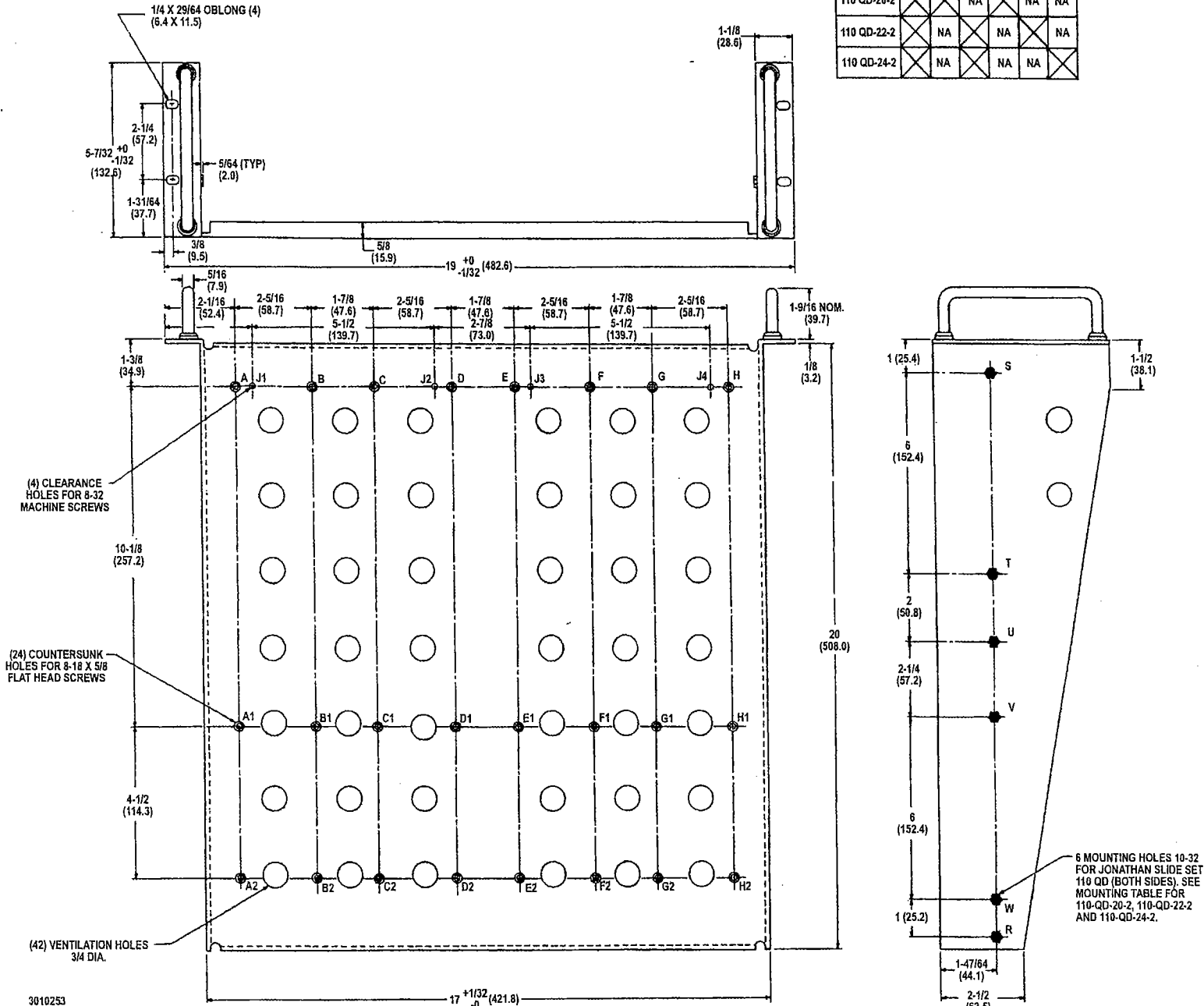


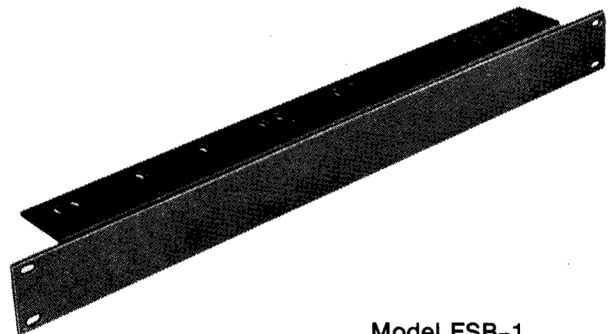
FIG. 3 MECHANICAL OUTLINE DRAWING.

AVAILABLE ACCESSORIES (NOT SUPPLIED, SEE FIG. 4)

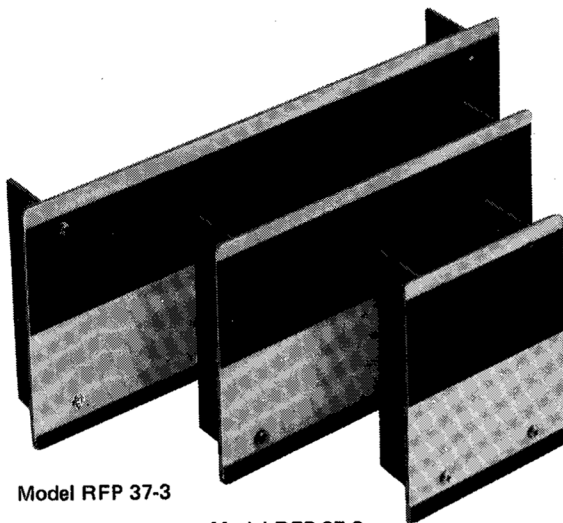
- a) **KEPCO FILLER PANELS.** These panels are mounted into pre-threaded holes on the bottom shelf of the RA-37. They are designed to cover unused front panel spaces in the rack adapter:
 - 1) KEPCO MODEL RFP 37-1 FILLER PANEL (ONE SPACE).
 - 2) KEPCO MODEL RFP 37-2 FILLER PANEL (TWO SPACES).
 - 3) KEPCO MODEL RFP 37-3 FILLER PANEL (THREE SPACES).
- b) **KEPCO FILLER SUPPORT BRACKETS.** These brackets should be used whenever the total load in an RA-37 exceeds 75 lbs:
 - 1) KEPCO MODEL FSB-1 FILLER SUPPORT BRACKET (1¾" High).
 - 2) KEPCO MODEL FSB-3 FILLER SUPPORT BRACKET (3½" high).
 - 3) KEPCO MODEL FSB-5 FILLER SUPPORT BRACKET (5¼" high).

SUPPLIED ACCESSORIES

(16) 8-18 x 5/8, self-tapping, flat-headed screws, for mounting up to four (4) units to the RA-37 Rack Adapter.



Model FSB-1
FILLER SUPPORT BRACKET



Model RFP 37-3

Model RFP 37-2

Model RFP 37-1

FIG. 4 OPTIONAL ACCESSORIES FOR THE RA-37 RACK ADAPTER.